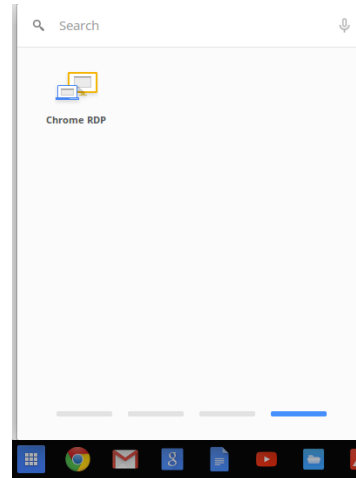
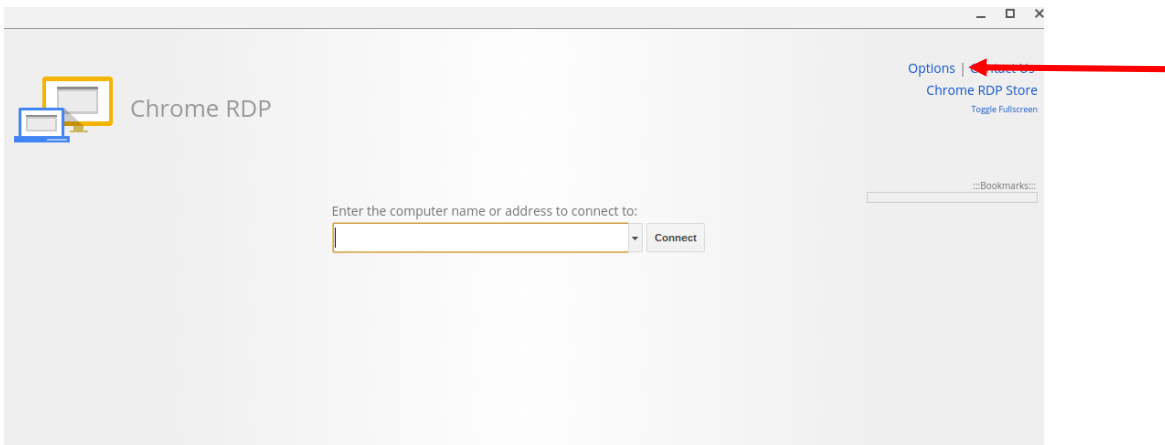


## Connect to Marion Local Terminal Server Using a Chromebook

1. Find Chrome RDP in the Apps menu
2. Click to open the Chrome RDP App

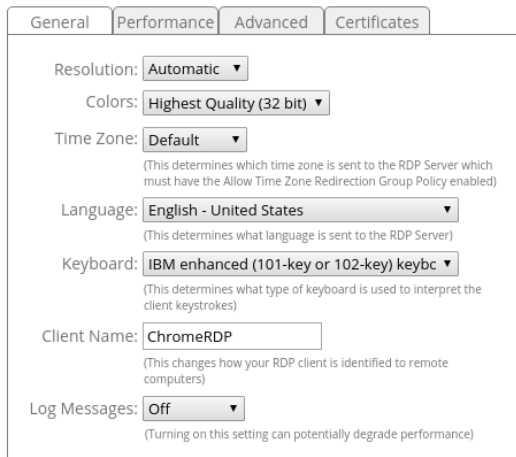


3. Click Options in the upper right hand corner

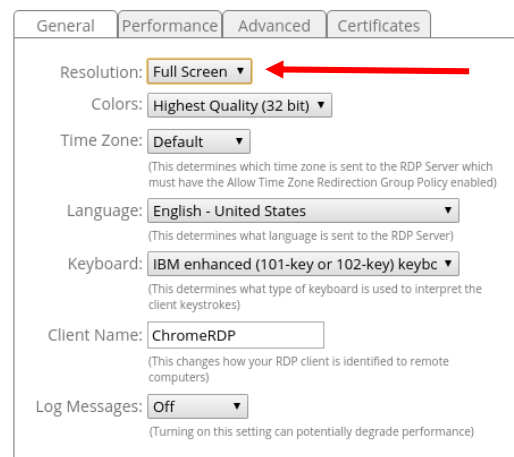


4. In the General Tab the default for Resolution is Automatic. Click the drop down arrow and select Full Screen.

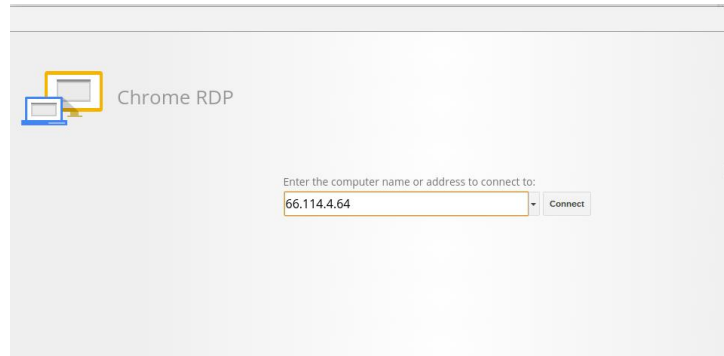
Chrome RDP Options



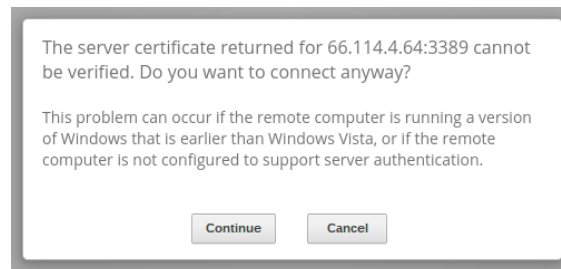
Chrome RDP Options



5. Click Ok
6. Enter the IP address 66.114.4.64

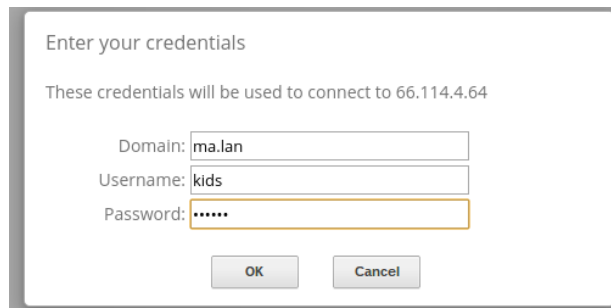


7. Click connect
8. If you get this message click Continue



9. Type in the
  - o Domain: ma.lan
  - o Username: (This is your regular school username)
  - o Password: (This is your regular school password)

10. Click Ok



\*\*If students cannot print from their Chromebook, they can connect to the terminal server and print. Follow the instructions above to connect to the terminal server.

1. Open up the file in Google
2. Click Print
3. Click Save as Pdf
4. Open the file from the saved location and print to HS Media Printer